



MAP Newsletter

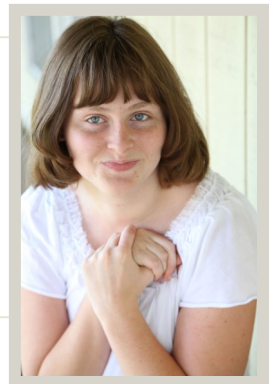
Making Advances Possible (MAP)

AUTISM & DEVELOPMENTAL MEDICINE INSTITUTE

A Whole New Perspective on the Evaluation and Treatment of Children with Special Developmental

Summer 2015

Welcome to the newsletter for Geisinger's Autism & Developmental Medicine Institute's (ADMI) Making Advances Possible (MAP) project. The MAP project is focused on collecting detailed information about health and development to better understand developmental disorders. Our team at ADMI in Lewisburg began asking families to participate in our MAP study in March 2014. To date, **96% of families have agreed to partner with us!** **THANK YOU** for your commitment to helping us with our project!



Get Involved at your Next Visit to ADMI

Besides the online surveys that are sent and completed by families, we are also doing face-to-face assessments as part of our study. Here are some of the assessments or tasks that our MAP participants complete:

- *Eye Tracking* involves looking at pictures on a computer screen while we record where you are looking. This task helps us to study how people look at different kinds of pictures.
- The *Peg Board Task* measures your ability to move your hands, fingers, and arms. You will be asked to place pegs in holes on a board in a certain amount of time.
- The *Balance and Sway Task* measures just that—your balance and sway - while you stand on a flat board that has balance sensors.

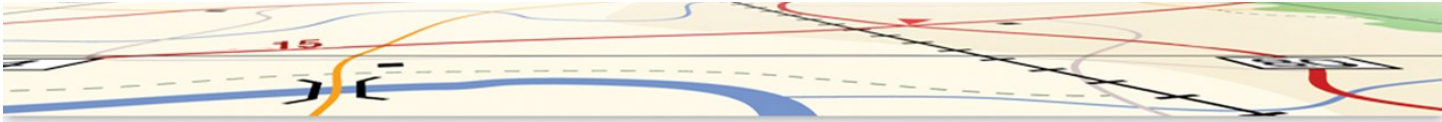
Most children and adults who help us with these tasks tell us that they're fun, and all of the information gathered helps us learn more about our patients and their families. If you wish to participate, we will ask you and your family to either arrive a bit early or stay a bit late after your appointment to complete some or all of these tasks.

To find out more about participating in face-to-face assessments, please contact Sara Deitrick by phone: 570.522.9408 or email: sgdeitrick@geisinger.edu.

About ADMI

ADMI is focused on clinical care and cutting edge research to help children with special developmental needs. The vision of ADMI is to expand and seamlessly integrate clinical services, research, and education through a multidisciplinary team of providers and researchers, including specialists in neurodevelopmental pediatrics, genomic medicine, psychology, speech-language pathology, radiology, and education.





Sensory Friendly Movie Series

Join us on Sunday, July 19th, for the movie Rio!

Many of today's films feature loud music, vivid special effects, explosions, fast scene changes, and multiple dimensions. Imagine the impact of these sensory effects on a child with special needs who may be eager to experience the joy of seeing a movie on the big screen, but is unable to withstand the sensory overload.

As part of ADMI's community outreach and family support initiatives, ADMI and The Campus Theatre are happy to offer children with special developmental needs and their families a chance to experience the joy of seeing a movie on the big screen. The Sensory Friendly Film Series will:

- Provide a comfortable, accepting environment for those who want to get up, move around or make noise
- Feature family friendly movies in 2D
- Begin on-time, with no previews or trailers
- Lower the volume of music and special effects
- Provide low-level lighting, instead of total darkness
- Allow families to bring or purchase snacks

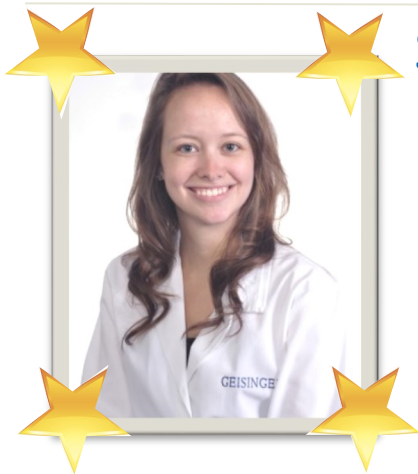
Doors will open at 1:30 pm. The movie will begin promptly at 2:00 pm. There is no charge to attend the movie! Donations will be accepted by the theatre to fund future screenings. Please RSVP to Megan Epler by calling 570.522.6281 or emailing meepler@geisinger.edu. The Campus Theatre is located at 413 Market Street, Lewisburg.



Summer Autism & Neurodevelopmental Disorders Internship (SANDI)

We began the second annual SANDI program on June 1st. Our SANDI students are a group of 8 smart and motivated undergraduates who work with members of our faculty on various research projects. The students complete individual and group research projects, shadow clinicians, and attend clinic and research conference and weekly meetings. They will present their research at the Susquehanna Valley Undergraduate Research Symposium on August 4th at Bucknell University.

Our program is full this summer, but if you know an undergraduate who is interested in being a SANDI student next summer in 2016, please have him or her email the co-directors of SANDI: Abby Hare, PhD (aehare@geisinger.edu) and Maggie King, PhD (mking1@geisinger.edu).



Star Researcher: Cora Taylor, PhD

Dr. Cora Taylor is a psychologist at ADMI who enjoys working in the clinic *and* doing important research. Dr. Taylor has played an integral part in getting our research database up and running. She created a uniform way to list assessments and make data fields so that we are able to accurately link MAP research to our clinical knowledge. As this database grows, it is Dr. Taylor's hope to use this knowledge to improve the diagnosis, treatment, and care of our patients and families at ADMI.

Dr. Taylor's favorite thing about ADMI is that she gets to work in a collaborative, challenging, and multidisciplinary environment with her amazing colleagues.



Remember to regularly check GeisingerADMI.org/events for updates and details about our summer celebrations and future ADMI events. In addition, [like us on Facebook](#) and [follow us on Twitter](#) to stay up to date!